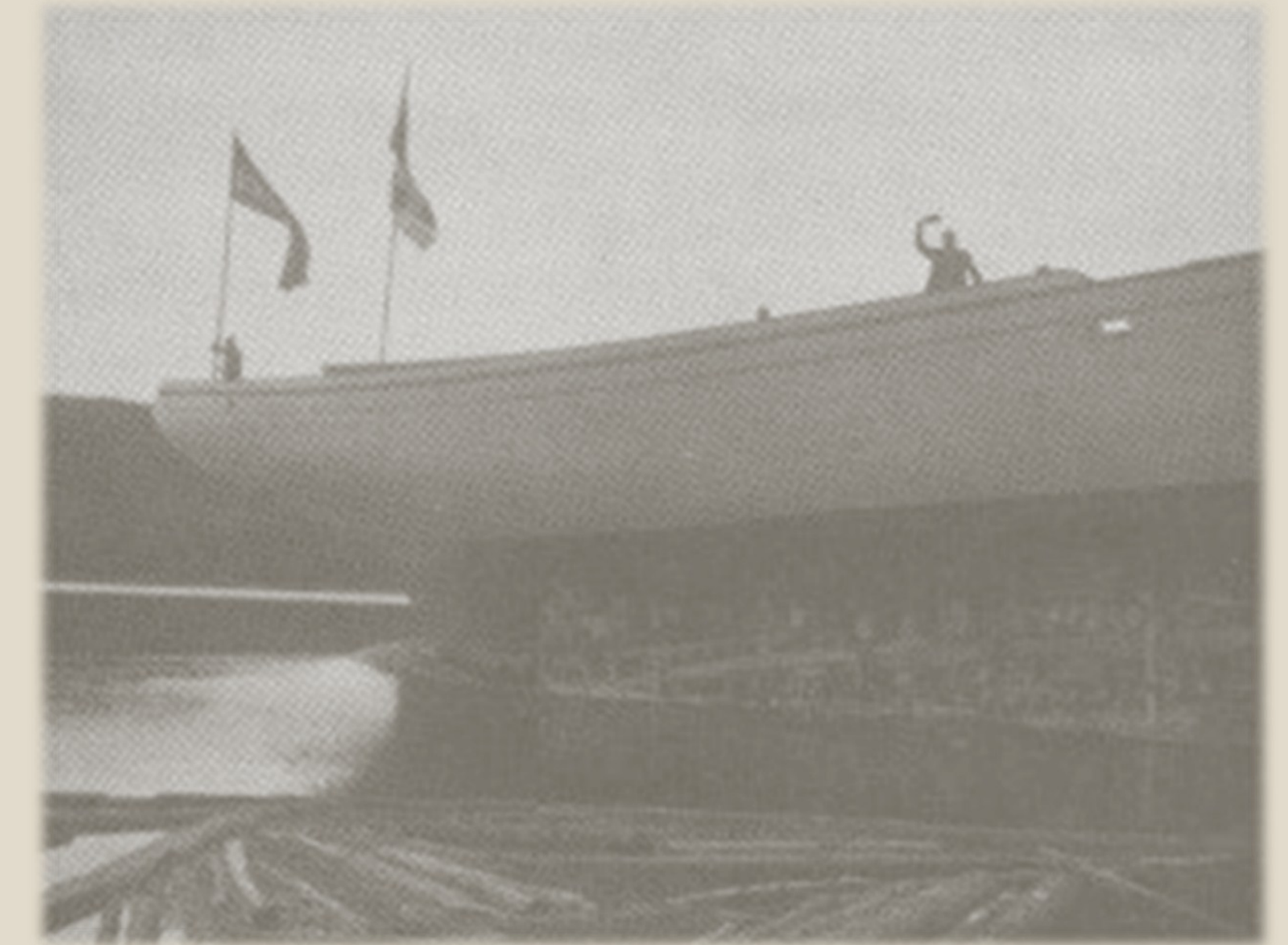


Shipbuilding in Port Blandford



With the growth on the tip of the Bonavista Peninsula in the late 1800's, people from the fishing communities started moving further into the head of Bonavista Bay for the forest resources. In addition to logging and sawmilling, shipbuilding played a role during the early years of development in Port Blandford. With the abundance of timber in the lush forests, several shipbuilding operations were located in various parts of Clode Sound to add to the growing schooner fleets around Newfoundland. In 1901, Daniel Pelley established a sawmill on Southwest River in Port Blandford, and part of the enterprise was a shipyard.

During the years of World War I and shortly thereafter, shipbuilding in Clode Sound reached its height. Steer Brothers Limited, a general trade business located in St. John's, had businessman Daniel Pelley build five three-masted schooners in Port Blandford at that time. Averaging approximately 350 tons each, these vessels were built for the foreign fishing trade, carrying dried cod to Europe and the West Indies.



With the advance of new shipbuilding technologies and materials, wooden schooners soon became less in demand and the shipyards throughout Clode Sound shut down. For many decades after, local residents still continued to use local timbers to build small fishing craft to be used in the bay such as motor boats, punts and dories.